

# Electromagnetic Measurement Laboratory

Electromagnetic Measurement Laboratory ( EML )

**Taiwan Accreditation Foundation (TAF)**  
is accredited in respect of laboratory



## Anechoic Compact-Range Chamber

- Quiet zone size:  $\geq 3.5 \times 2.25$  feet @ 2~18GHz
- Amplitude Ripple:  $\leq 0.5$ dB.
- Clutter Level:  $\leq -40$ dBsm



## EML Test Instrument

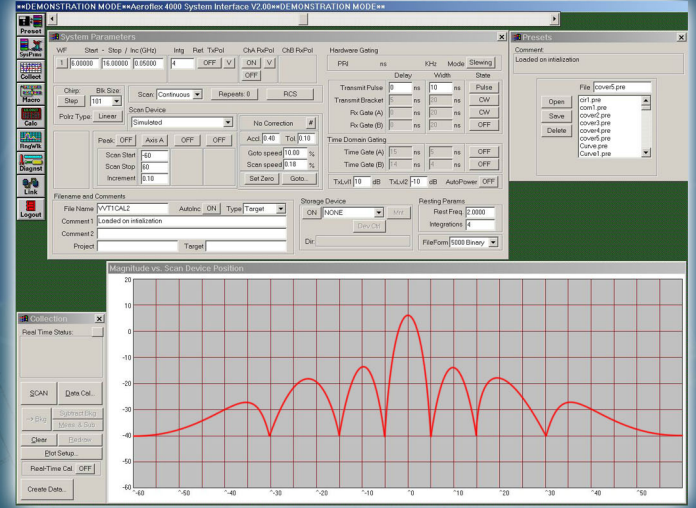
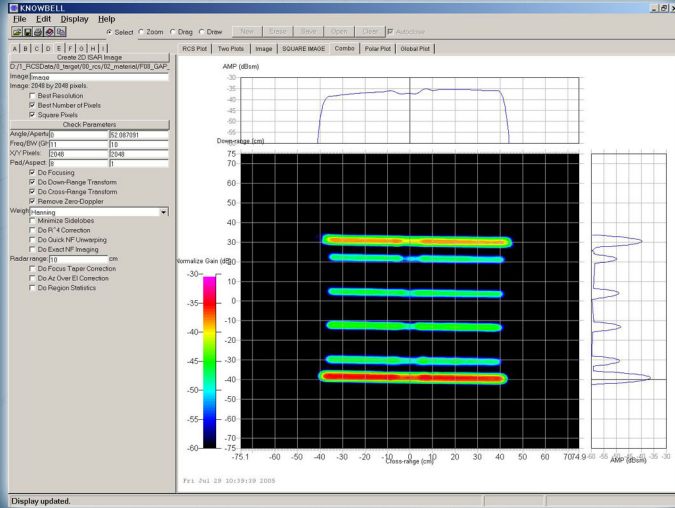
- Microwave Vector Network Analyzer
- Microwave Signal Generator
- Microwave Hardware Gating Module
- Positioner Controller
- EMI Receiver
- EMI Antenna



# EML System Software

- Knowbell™ Microwave Measurement Software

- Aeroflex™ 4000 Microwave Data Process and Analysis Software



# EML Application

- RCS Measurement
- Antenna Measurement
- EMI Measurement

